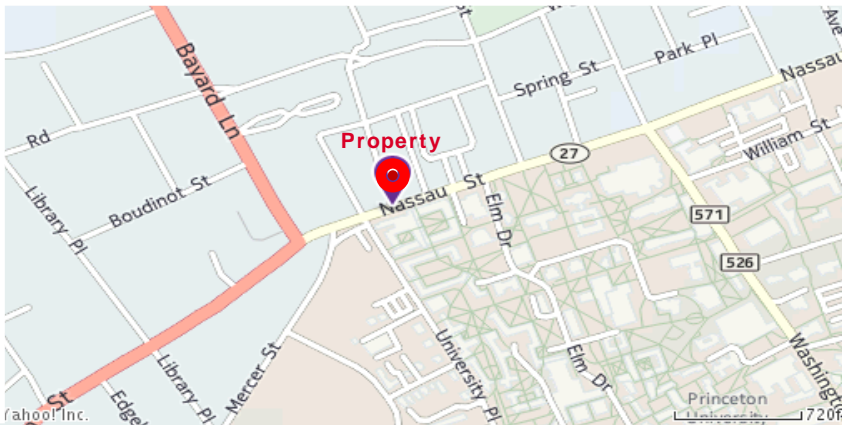




92 Nassau Street, Princeton NJ

Downtown Princeton NJ



Sub Lease 600 SF

Office Space, 4th Floor

- Rent: \$3,000/ per month
- Master Lease expires February 2021
- Class A Office Space
- Elevator access
- 5-story landmark Office Building with Street Retail
- Tenants include Jewelry Store, MD's, lawyers, psychologists, architects, accountants, investment managers, and internet startups.
- Opposite to Princeton University
- Directly on Route 27, easy access to US-Route One, leading to the NJ Twp.

Contact: Jerry Fennelly, Matt Fennelly

www.Fennelly.com | 609.520.0061 | Fennelly@Fennelly.com

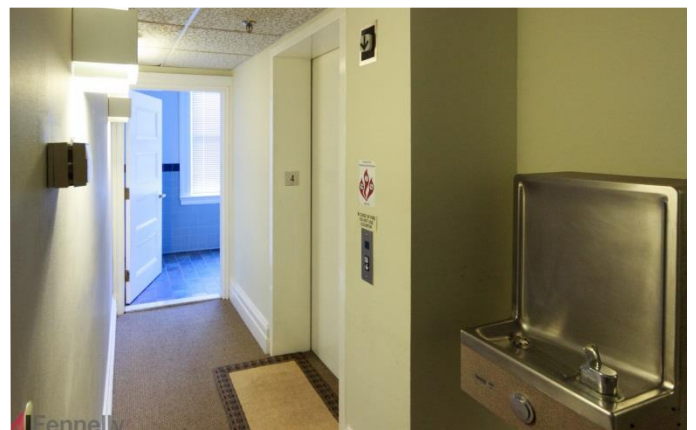
NAI Fennelly™

Commercial Real Estate Services, Worldwide.

92 Nassau Street, Princeton NJ

Building houses
Offices and
Specialty Shops

Located in the heart of
historic downtown
Princeton,
at the corner of
Nassau and
Witherspoon Streets



Contact: Jerry Fennelly, Matt Fennelly

www.Fennelly.com | **609.520.0061** | Fennelly@Fennelly.com

NAI Fennelly™
Commercial Real Estate Services, Worldwide.