

# 3000-4000 Waterview Drive

Hamilton Twp NJ 08691



180,000 SF Office Space for Lease



## Genesis Biotechnology Campus: Immediately available

- 100,000 SF at Building #4000, a four story Building
- 80,000 SF at Building #3000, a five story Building
- Parking: 3.3 cars/1,000 SF
- Highly Skilled and Educated Labor Pool
- Located midway between New York and Philadelphia
- Superior Transportation Infrastructure: NJ Turnpike , Interstates 95, 195 and 295, Route One
- Access to Commuter Rail Services, to a Light Rail System and to Trenton-Mercer Airport, Walkable Community

**Rental Rate \$33.00 SF plus  
Utilities & Janitorial**

**Contacts: Jerry Fennelly, Patrick Dintrone**

[www.Fennelly.com](http://www.Fennelly.com) | **609.520.0061** | [Fennelly@Fennelly.com](mailto:Fennelly@Fennelly.com)

**NAI Fennelly™**

Commercial Real Estate Services, Worldwide.

The information contained herein has been given to us by the owner of the property or other sources we deem reliable. We have no reason to doubt its accuracy, but we do not guarantee it. All information should be verified prior to purchase or lease.

# 3000-4000 Waterview Drive

Hamilton Twp NJ 08691

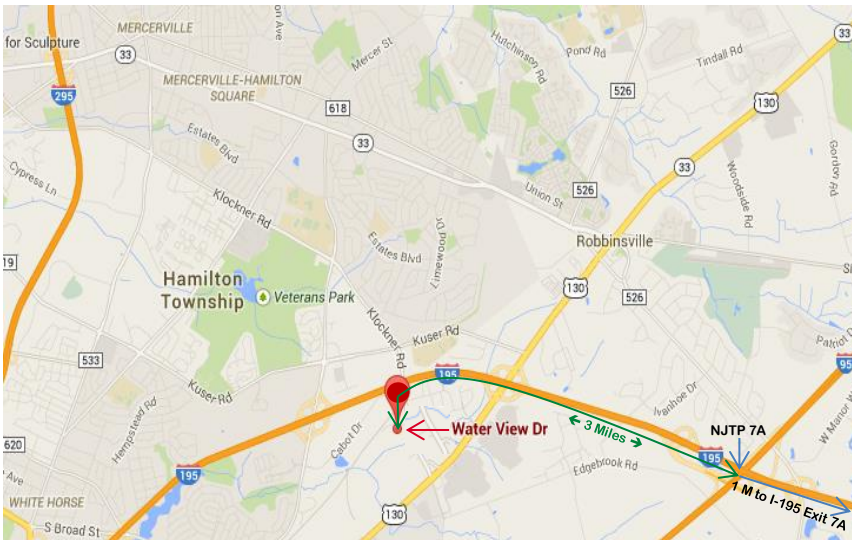


New construction - located in Einstein's Alley. A 50 acre campus environment for collaborative excellence.

Genesis Biotechnology Campus has been designed by one of the most experienced laboratory architect/ engineering groups in the country.

The Campus will provide the needs of growing companies in any stage of development from discovery through development to market implementation.

A total of 300,000 square feet including an integral amenity building to include services such as: Science Library, Conference Center, Fitness Center, Restaurants and Dry Cleaning.



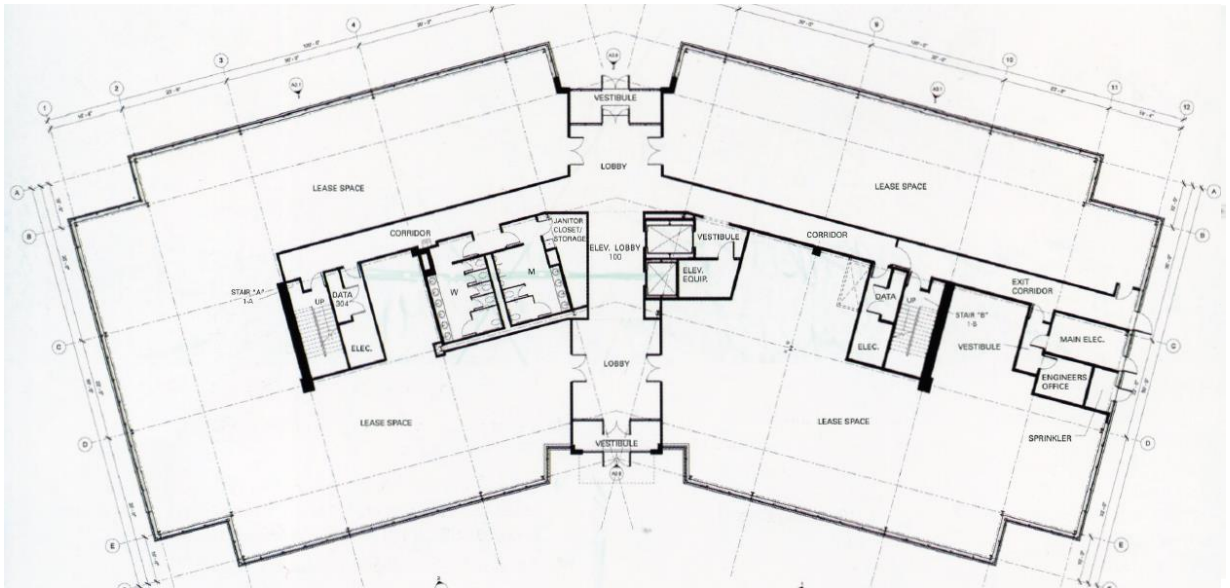
**Contacts: Jerry Fennelly, Patrick Dintrone**

www.Fennelly.com | **609.520.0061** | Fennelly@Fennelly.com

**NAI Fennelly™**  
Commercial Real Estate Services, Worldwide.

# 3000-4000 Waterview Drive

Hamilton Twp NJ 08691



**Contacts: Jerry Fennelly, Patrick Dintrone**

[www.Fennelly.com](http://www.Fennelly.com) | **609.520.0061** | [Fennelly@Fennelly.com](mailto:Fennelly@Fennelly.com)

**NAI Fennelly™**  
Commercial Real Estate Services, Worldwide.