

934 Parkway Avenue, Ewing NJ



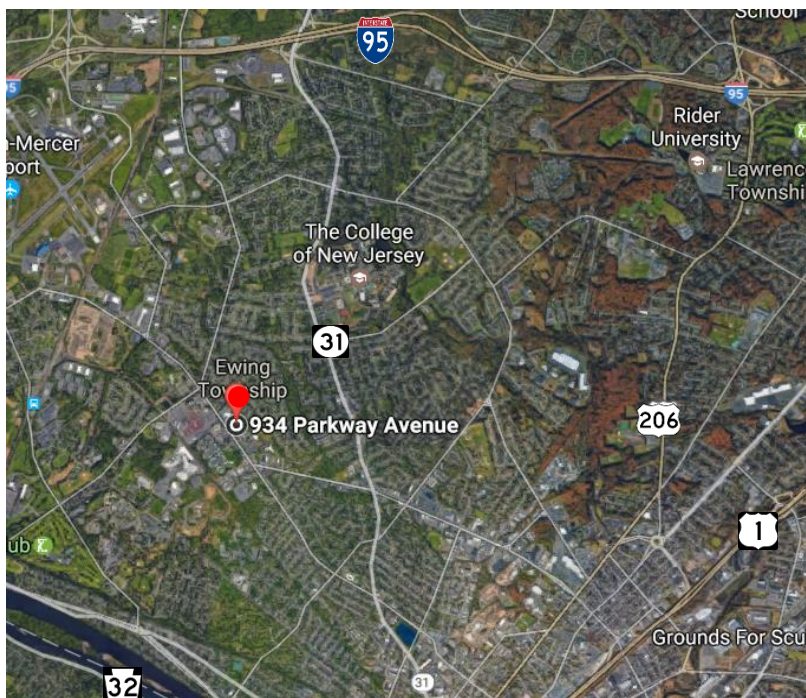
FOR LEASE
Two Office Suites

Immediately available
12,555 SF OfficeSpace

1st floor: 9,200 SF
street level; office, urgent care or retail uses; handicap accessible; open floorplan

2nd floor: 3,355 SF
divisible; elevator serviced

- Lease: \$22.00/SF , modified gross, Util. & Janitorial
- Parking: 78 spaces: 3.55/1,000SF
- Ceiling: 14'
- Two story Building: 20,000 SF, on 1.06 Acres; renovated exterior.
- Handicap accessible; ADA compliant
- Building's other tenant is the "U.S. Department of Veteran Affairs"
- Zone: B-H (Highway Business)
- Ewing Township, Mercer County
- On the bus line; at signalized intersection of Parkway and Farrell Ave, across from the NJ Department of Transportation.
- Access to major highways; >1 Mile to Route 29 and I-95.



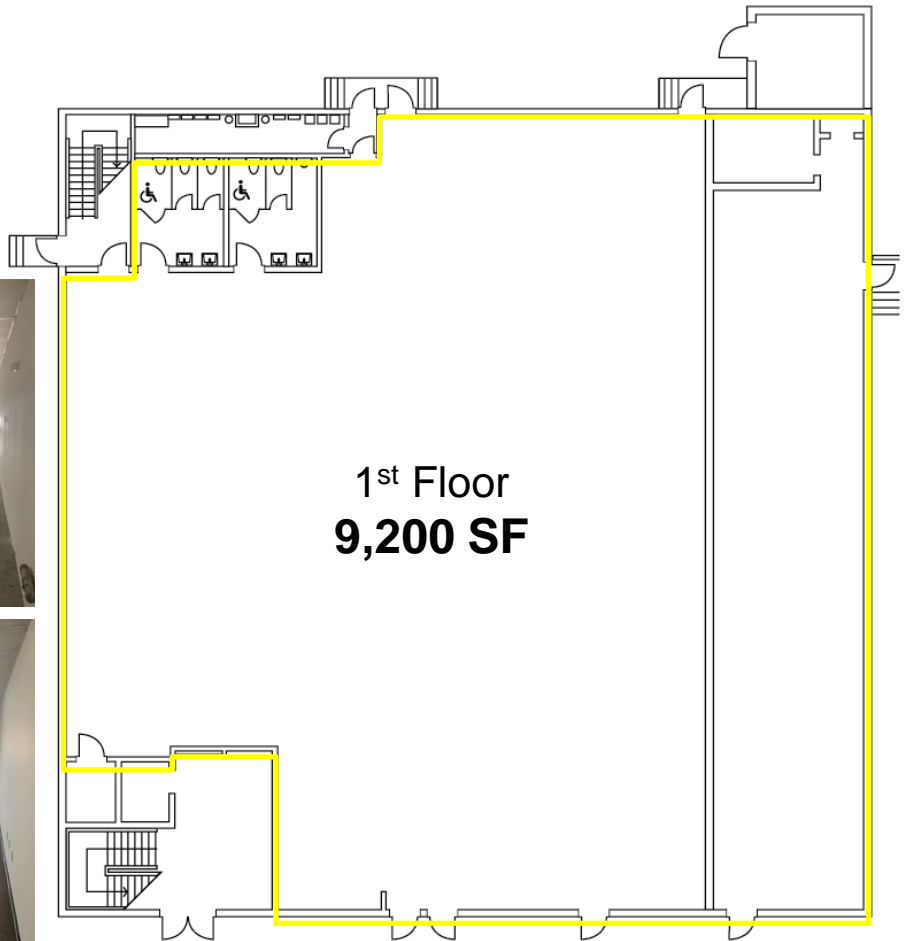
Contacts: Jerry Fennelly, Tom Barbera

www.Fennelly.com | **609.520.0061** | Fennelly@Fennelly.com

NAI Fennelly™
Commercial Real Estate Services, Worldwide.

The information contained herein has been given to us by the owner of the property or other sources we deem reliable. We have no reason to doubt its accuracy, but we do not guarantee it. All information should be verified prior to purchase or lease.

934 Parkway Avenue, Ewing NJ



- High visibility location • Public transportation and amenities nearby in the Ewing Square Shopping Center
- Situated at signalized intersection of Parkway & Farrell Ave, across from the NJ Dept. of Transportation.

Contacts: Jerry Fennelly, Tom Barbera

www.Fennelly.com | 609.520.0061 | Fennelly@Fennelly.com

NAI Fennelly™
Commercial Real Estate Services, Worldwide.