

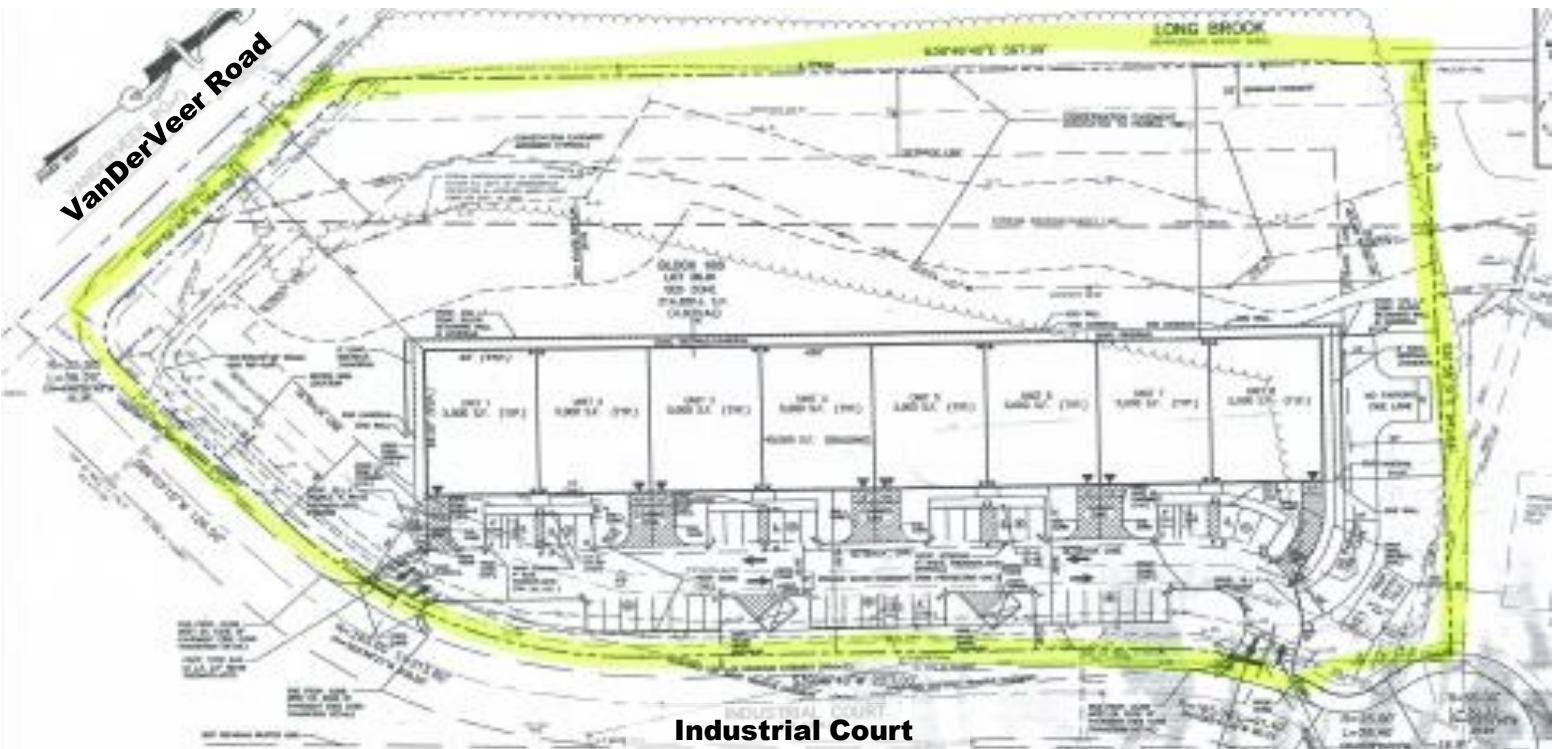


**4.93 Acres  
Howell, NJ  
in Monmouth  
County**

**Fully approved for  
40,000 SF  
Warehouse/Office**

**Asking Price:  
\$800,000**

**FOR SALE – 4.93 ACRES**  
**Industrial Court, Howell NJ**



**NAI Fennelly**

Commercial Real Estate Services, Worldwide.

Web: [www.fennelly.com](http://www.fennelly.com) ■ Email: [fennelly@fennelly.com](mailto:fennelly@fennelly.com)

**Contact Information:**

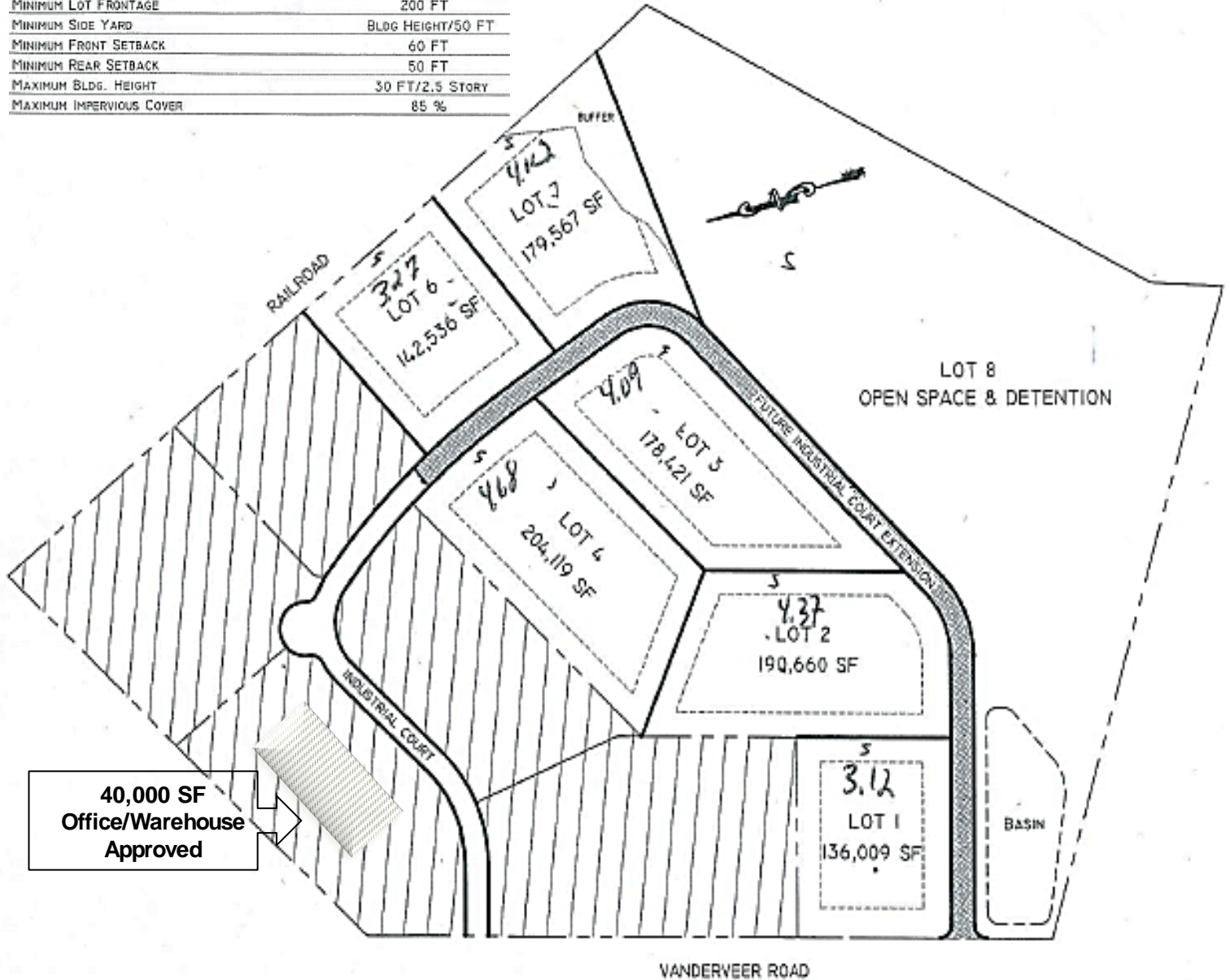
**Gerard J. Fennelly**

**Ph: 609-520-0061**

The information contained herein has been given to us by the owner of the property or other sources we deem reliable. We have no reason to doubt its accuracy, but we do not guarantee it. All information should be verified prior to purchase or lease.

# Industrial Court, Howell NJ, 4.93 ACRES

ZONE SED (SPECIAL ECONOMIC DISTRICT)	REQUIRED
MINIMUM LOT AREA	120,000 SF
MINIMUM LOT FRONTAGE	200 FT
MINIMUM SIDE YARD	BLDG HEIGHT/50 FT
MINIMUM FRONT SETBACK	60 FT
MINIMUM REAR SETBACK	50 FT
MAXIMUM BLDG. HEIGHT	30 FT/2.5 STORY
MAXIMUM IMPERVIOUS COVER	85 %



**Zoned SED (Special Economic District)  
Fully approved for 40,000 SF Warehouse/Office**



Commercial Real Estate Services, Worldwide.

Web: [www.fennelly.com](http://www.fennelly.com) ■ Email: [fennelly@fennelly.com](mailto:fennelly@fennelly.com)

**Contact Information:**

**Gerard J. Fennelly**

**Ph: 609-520-0061**

The information contained herein has been given to us by the owner of the property or other sources we deem reliable. We have no reason to doubt its accuracy, but we do not guarantee it. All information should be verified prior to purchase or lease.