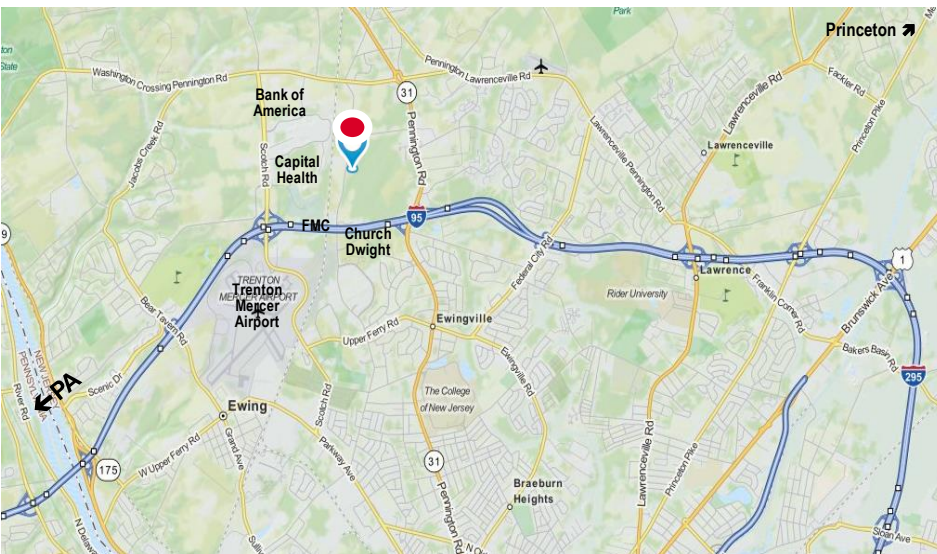


Reed Road Industrial Park

Pennington NJ 08534

46.28 Acres
Block 88, Lot 33.99
Sale Price \$1,500,000



- Zoned: SI, Special Industrial,
- Farm Assessed
- Property Class 4A
- Possible Uses: Offices, Warehouses, Flex Space, Residences, Commercial services.
- Located in Hopewell Twp, Mercer County NJ
- Access from Route 31 and Scotch Road Exits



Commercial Real Estate Services, Worldwide.

Web: www.fennelly.com ■ Email: fennelly@fennelly.com

Contact Information:

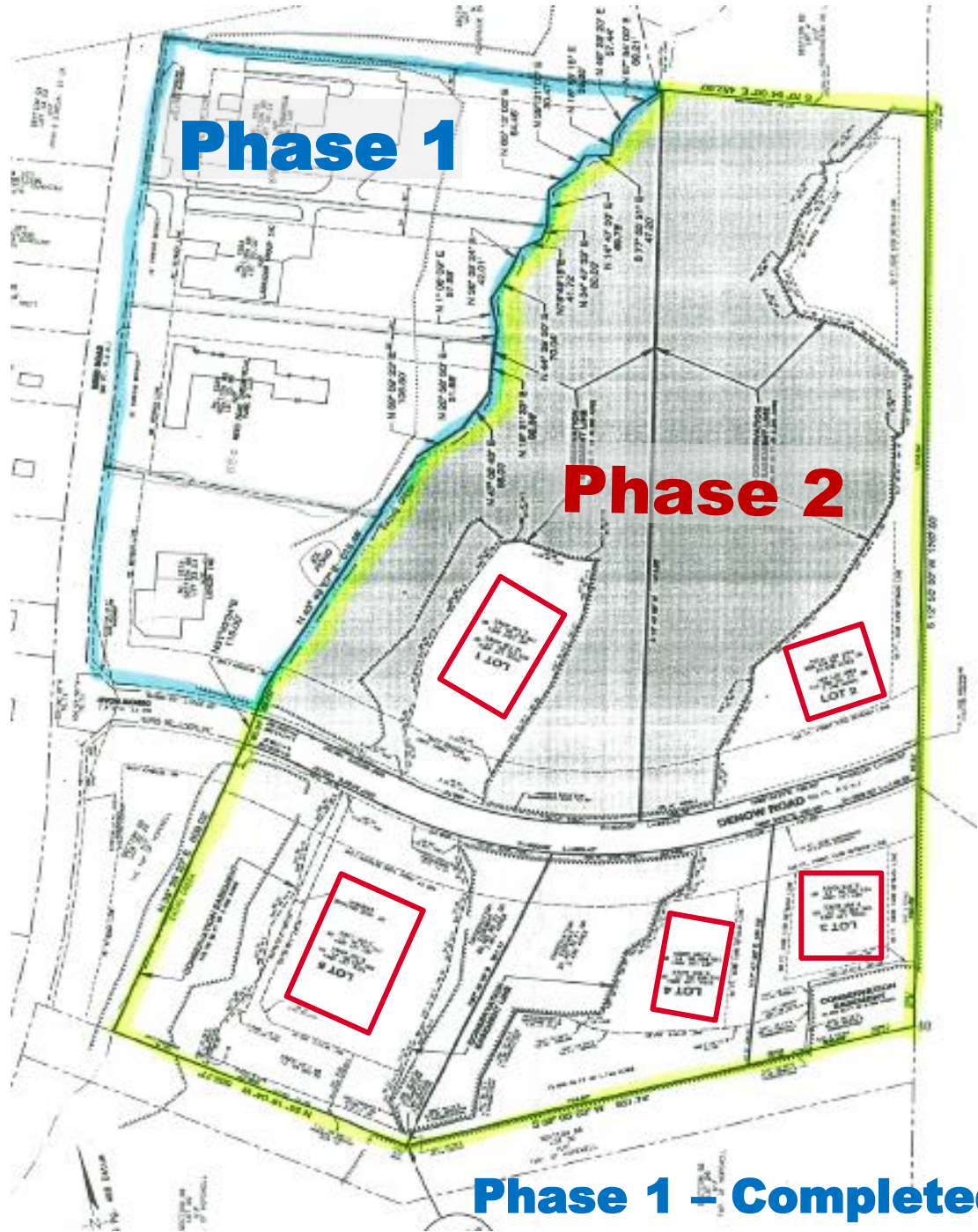
Gerard J. Fennelly

Ph: 609-520-0061

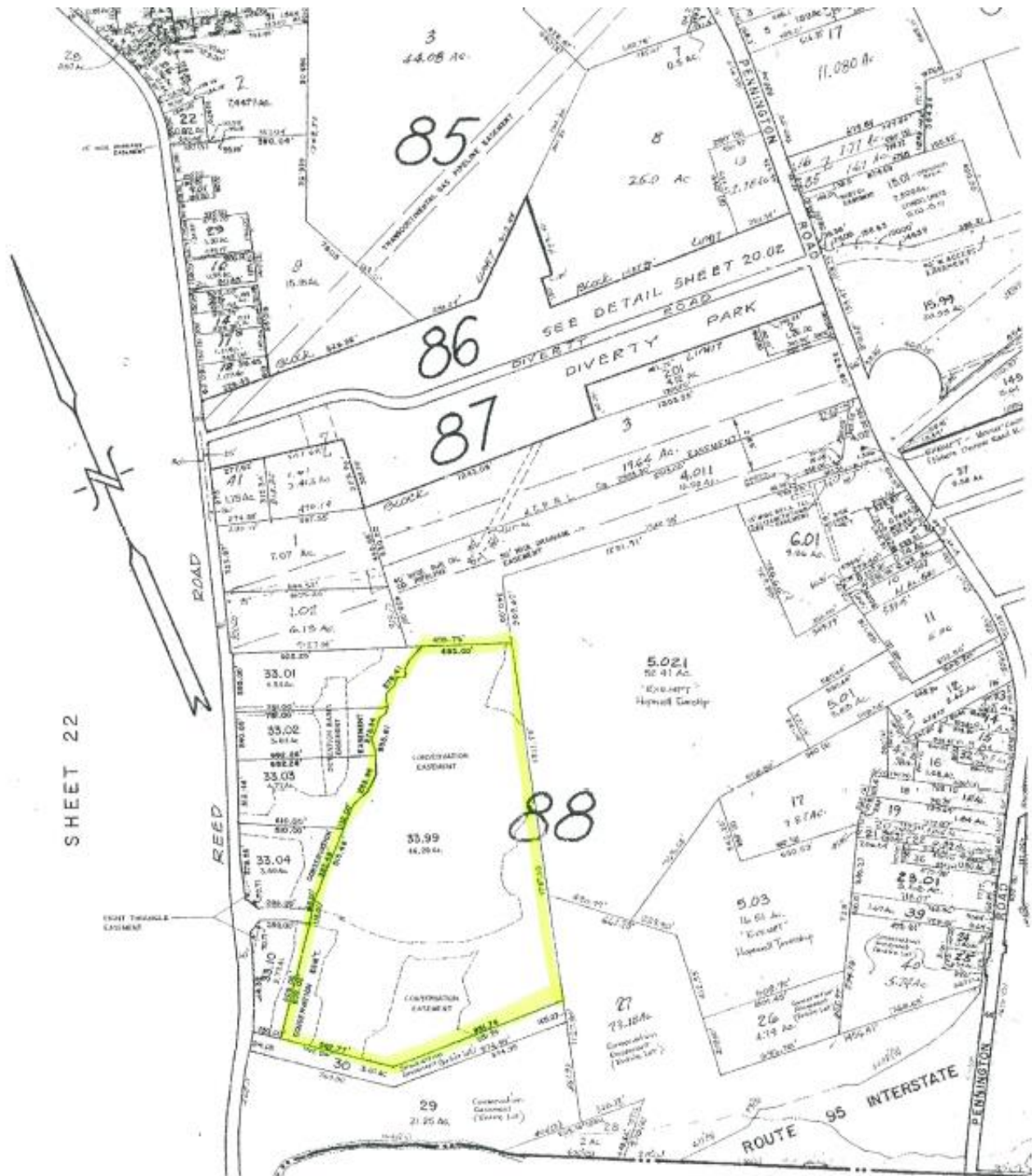
The information contained herein has been given to us by the owner of the property or other sources we deem reliable. We have no reason to doubt its accuracy, but we do not guarantee it. All information should be verified prior to purchase or lease.

Reed Road Industrial Park

Pennington NJ



Potential Capacity:
Office: 16,000 SF | Warehouse: 25,000 SF



Reed Road Industrial Park, Pennington NJ