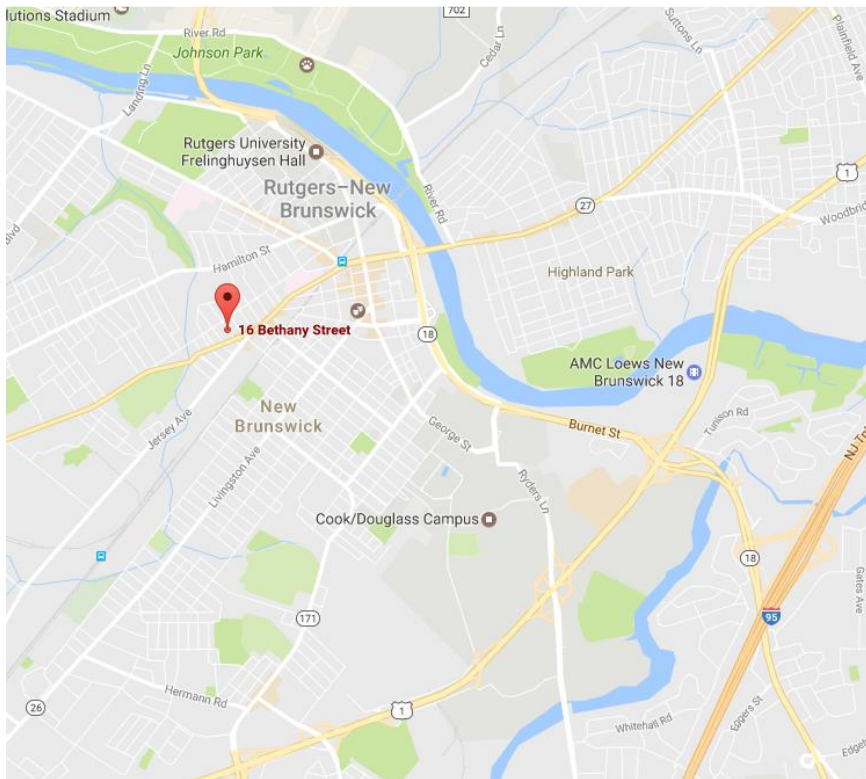


# 16 Bethany Street, New Brunswick NJ



**15,633 SF**  
**Warehouse/Office for Sale**



**Sale Price:**  
**\$1,095,000.00**

- 15,633 SF Warehouse/Office Building
- PROPERTY VACANT
- Lot Size: .29 Acres
- Parking: Fenced-in Lot, Street Parking
- 16' Ceilings
- Elevator Serviced, Freight Elevator to Basement Level
- 2 External Docks
- Zoned C-3A: Community Office/Professional
- Gas Fired Steam, Hot Air
- Taxes: \$23,000
- ½ mile to RWJ University Hospital
- .7 miles to New Brunswick Train Station
- Access to Routes 27, 18 and 1

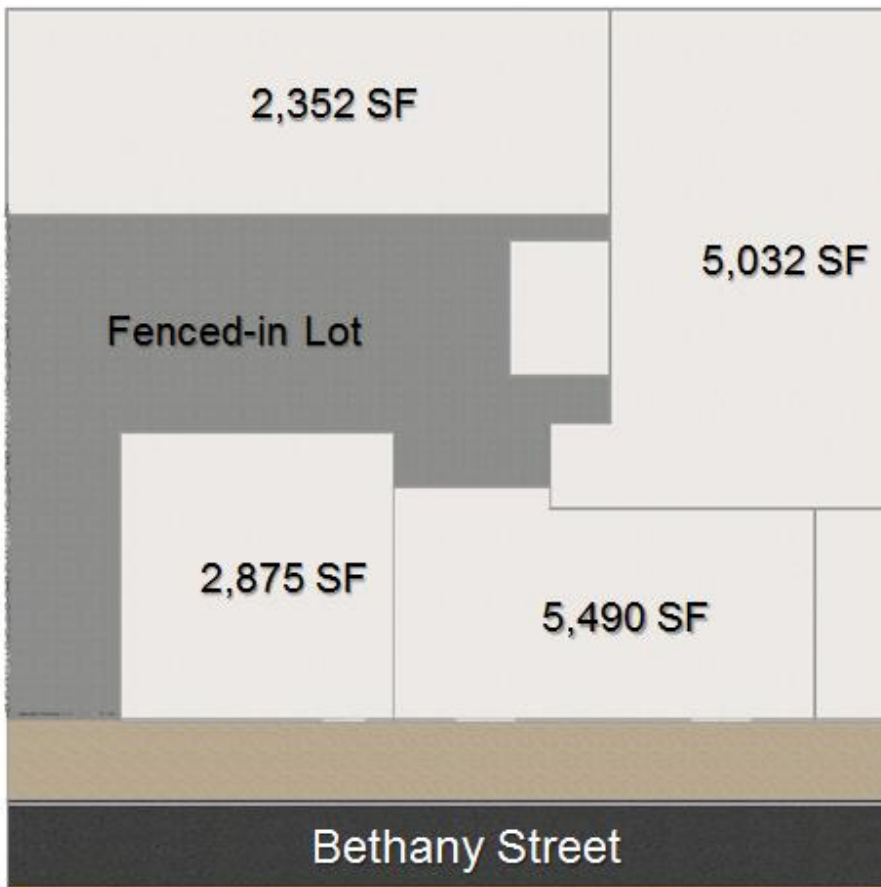
**Contacts: Jerry Fennelly, Matthew Fennelly**

[www.Fennelly.com](http://www.Fennelly.com) | **609.520.0061** | [Fennelly@Fennelly.com](mailto:Fennelly@Fennelly.com)

**NAI Fennelly™**  
Commercial Real Estate Services, Worldwide.

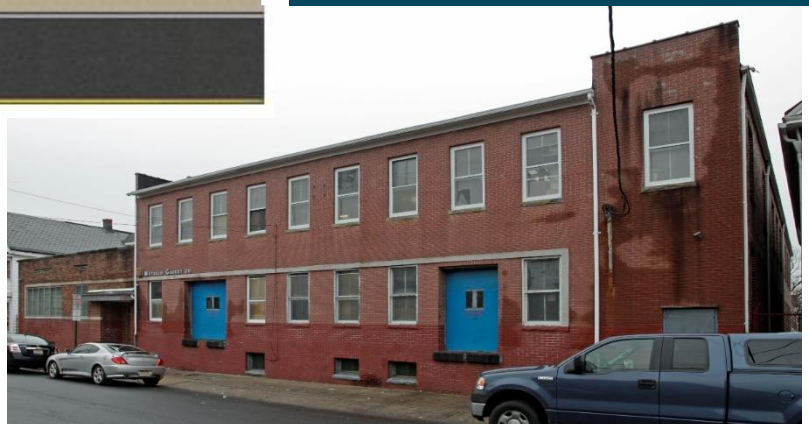
The information contained herein has been given to us by the owner of the property or other sources we deem reliable. We have no reason to doubt its accuracy, but we do not guarantee it. All information should be verified prior to purchase or lease.

# 16 Bethany Street, New Brunswick NJ



## C-3A - Principal Uses

- Medical And Dental Offices
- Legal/Accounting Offices
- Planning, Professional Engineering, Architectural Offices
- Financial, Insurance And Real Estate Offices
- Funeral Homes, Public And Nonprofit Schools



**Contacts: Jerry Fennelly, Matthew Fennelly**

[www.Fennelly.com](http://www.Fennelly.com) | **609.520.0061** | [Fennelly@Fennelly.com](mailto:Fennelly@Fennelly.com)

**NAI Fennelly™**  
Commercial Real Estate Services, Worldwide.

The information contained herein has been given to us by the owner of the property or other sources we deem reliable. We have no reason to doubt its accuracy, but we do not guarantee it. All information should be verified prior to purchase or lease.