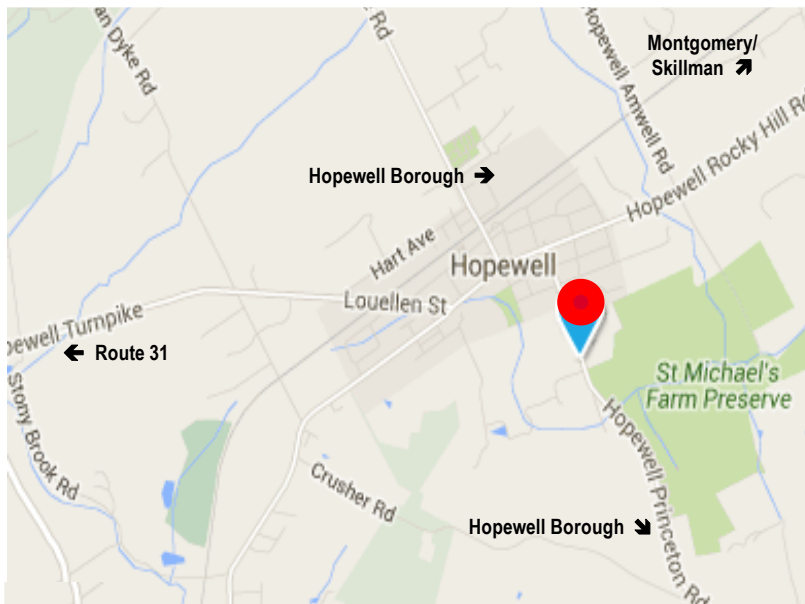




**83 Princeton Avenue, Suite 3D
Hopewell NJ
Professional Office Condo**



FOR SALE

1,238.69 SF Condo

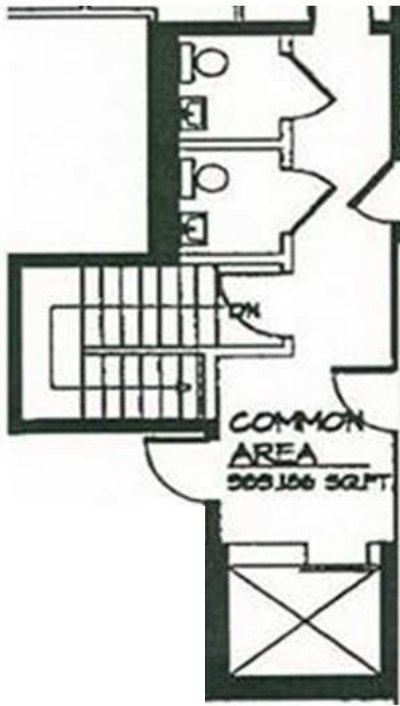
- **Sale (reduced price): \$175,000**
- Taxes: \$4,808.00/year (2016)
- Condo Fee: \$6,836.00/year (2017)
- Available with Furniture and Avaya phone system with 10 phones networked for the office
- Space has lots of Windows – Natural Light, Open Layout, Kitchenette/Break Room
- Free Internet Service
- 15 Min. to Downtown Princeton
- Convenient to Route 1, I-295, I-95 and Route 31
- Located in Hopewell Township, Mercer County
- Within Walking Distance from a Beautiful Downtown Destination

Contacts: Gerard Fennelly, Tom Barbera

www.Fennelly.com | **609.520.0061** | Fennelly@Fennelly.com

NAI Fennelly™
Commercial Real Estate Services, Worldwide.

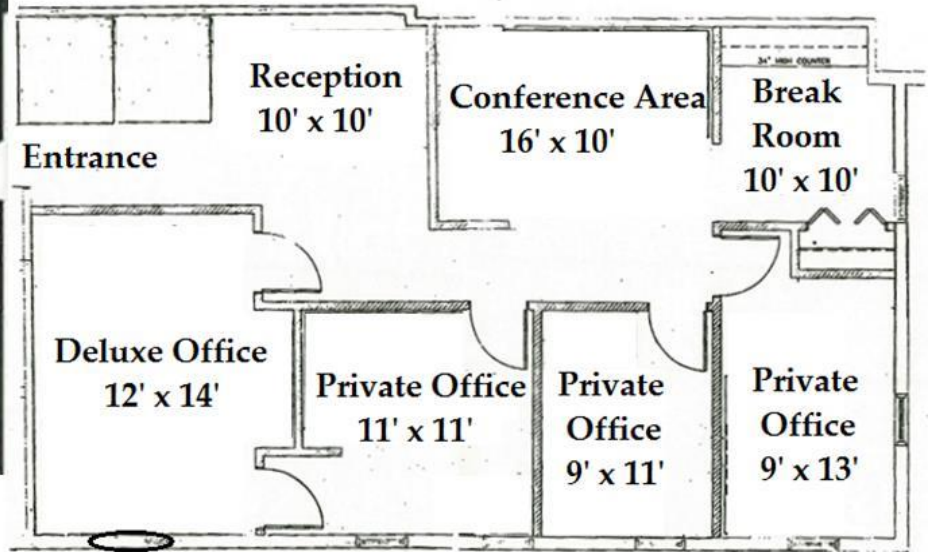
83 Princeton Avenue, Hopewell NJ 08525



RECEPTION



CONFERENCE AREA



MEASUREMENTS ARE APPROXIMATE



BREAK ROOM

**Floorplan
Suite 3D
1,238.69 SF**



DELUXE OFFICE

Contacts: Gerard Fennelly, Tom Barbera

www.Fennelly.com | **609.520.0061** | Fennelly@Fennelly.com

NAI Fennelly™
Commercial Real Estate Services, Worldwide.